

Bux-Mont Allergy & Asthma, LLC
620 W Chestnut St, Suite 201
Perkasie, PA 18944
215 257-5000

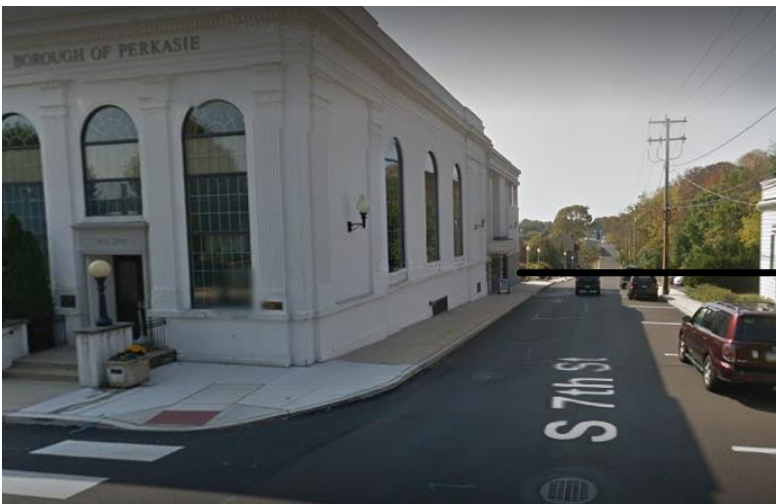
Directions to New Office

From 309 Bypass South, get off at PA-563/ Perkasie exit and turn right off exit ramp towards Ridge road. Follow below directions from Ridge road.

From 309 Bypass North, get off at PA-563/ Perkasie exit and turn left off exit ramp towards Ridge road. Follow below directions from Ridge road.

Directions from Ridge Road.

1. Travel **0.1 mile** and then **turn right onto PA-563 Ridge Road.**
2. **Travel 1.7 miles on Ridge Road.** When you see Revivals Community Center on the left side be prepared to make **next right turn onto Market Street** right by Fyre Body art.
3. **Drive down the hill on Market Street** for around **0.5 miles** going past the cemetery and railroad tracks approaching downtown Perkasie.
4. **Turn right onto 7th Street.** Go past Shelly's Hardware. You will see the **Perkasie borough building** on the left. We are located in the Perkasie Borough building on the second floor. **Park on 7th street or in one of the free parking lots** behind the Perkasie Borough building.



Entrance to office on the side of Perkasie Borough Building



Once in the building, take the elevator or stairs to the 2nd floor